

# Valves for Cryogenic Service

## Type 01351 - Globe Valve

# HEROSE



### Cryogenic-Globe and Globe/Check Valves, PN50

Stainless steel body and topwork,  
 "live loaded" gland packing  
 "cleaned and degreased for oxygen service"

**Part No. 01351.X.000\***

**Part No. 01351.X.500\* Globe/Check Valve**

\*Butt weld connection for stainless steel pipes acc. to DIN EN ISO 1127 or ASTM A312

**Part No. 01351.X.0004**

**Part No. 01351.X.5004 Globe/Check Valve**

Socket weld connection for stainless steel pipes acc. to DIN EN ISO 1127 and ASTM A312

Available options - on request only:

- Welded stainless steel stubs acc. to DIN EN ISO 1127 or ASTM A312 - length FF + 150mm
- Valve with control disc (tapered design)



### Applications:

Approved for air gases and cryogenic liquefied gases such as oxygen, nitrogen, krypton, carbon dioxide, argon, dinitrogen monoxide, trifluormethan, carbon oxide, methane, ethane and ethylene.

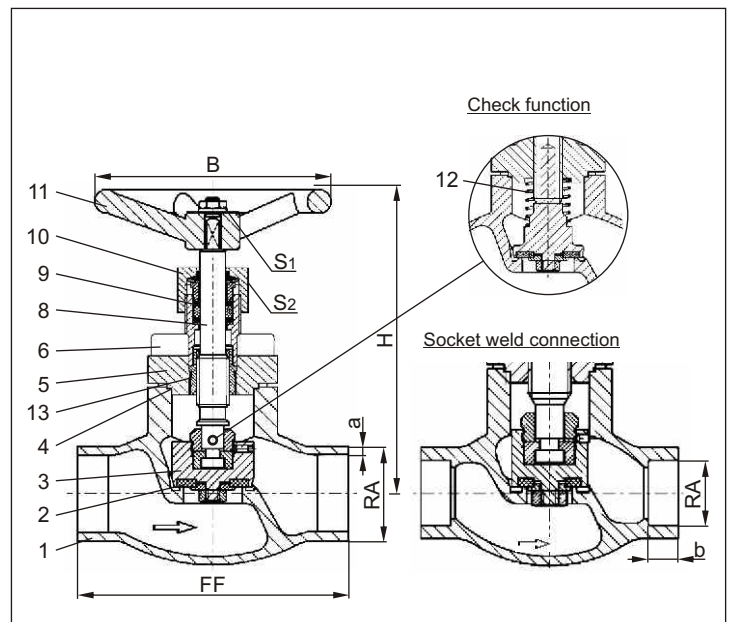
Working temperature: -196°C / -321°F (77K) up to +120°C / +248°F (393K)

Recommended working temperature: -60°C / -76°F (213K) up to +120°C / +248°F (393K)

| Materials       | DIN EN                     | ASTM            |
|-----------------|----------------------------|-----------------|
| 1 Body          | 1.4308                     | A 351 CF8       |
| 2 Valve seal    | PTFE / Carbon filled (25%) |                 |
| 3 Disc          | 1.4301                     | A 276 Grade 304 |
| 4 Bonnet gasket | PTFE                       |                 |
| 5 Headpiece     | 1.4301                     | A 276 Grade 304 |
| 6 Bolts         | 1.4301/A2                  | A 194 B8        |
| 8 Stem          | 1.4301                     | A 276 Grade 304 |
| 9 Gland packing | Graphite / PTFE            |                 |
| 10 Gland nut    | 1.4305                     | A 276 Grade 303 |
| 11 Handwheel    | Aluminium alloy            |                 |
| 12 Spring       | 1.4310                     | A 276 Grade 302 |
| 13 Bush         | CW452K                     | B 130 Alloy A   |

Standard marking acc. to Pressure Equipment Directive 97/23/EG (PED).

Marking acc. to Directive 99/36/EG (TPED) will only be carried out by written notice on purchase order.



| Type 01351 – Standard design        | Technical data    |       |       |       |       |       |      |       |       |       |       |       |       |
|-------------------------------------|-------------------|-------|-------|-------|-------|-------|------|-------|-------|-------|-------|-------|-------|
|                                     | DN                | 10    | 15    | 15    | 20    | 25    | 32   | 40    | 40    | 50    | 65    | 80    | 100   |
| Nominal size                        | .X.               | 1012  | 1517  | 1521  | 2026  | 2533  | 3238 | 4042  | 4048  | 5060  | 6570  | 8088  | 0114  |
| Dimension code                      |                   |       |       |       |       |       |      |       |       |       |       |       |       |
| Face-to-face dimension              | FF                | 70    | 85    | 85    | 100   | 115   | 115  | 130   | 130   | 155   | 205   | 245   | 280   |
| Height                              | H                 | 140   | 140   | 140   | 140   | 140   | 170  | 175   | 175   | 200   | 230   | 280   | 320   |
| Outside pipe-Ø DIN EN ISO 1127      | RA                | 12.0  | 17.2  | 21.3  | 26.9  | 33.7  | 38.0 | 42.4  | 48.3  | 60.3  | 76.1  | 88.9  | 114.3 |
| Wall thickness pipe DIN EN ISO 1127 | a                 | 1.0   | 1.6   | 2.0   | 2.0   | 2.0   | 2.0  | 2.0   | 2.0   | 2.0   | 2.6   | 3.2   | 6.0   |
| Outside pipe-Ø ASTM A312            | RA                | 13.72 | 17.15 | 21.34 | 26.67 | 33.40 | -    | 42.16 | 48.26 | 60.33 | 73.03 | 88.90 | 114.3 |
| Wall thickness pipe ASTM A312       | a                 | S10   | S40   | S10   | S10   | S10   | -    | S10   | S10   | S10   | S40   | S10   | S40   |
| Socket depth                        | b                 | 6     | 10    | 10    | 13    | 13    | -    | 13    | 13    | 16    | 16    | 16    | 20    |
| Handwheel-Ø                         | B                 | 80    | 100   | 100   | 100   | 100   | 125  | 125   | 125   | 125   | 200   | 250   | 315   |
| Wrench size across flats            | S <sub>1</sub>    | 10    | 10    | 10    | 10    | 10    | 13   | 13    | 13    | 13    | 13    | 13    | 13    |
| Wrench size across flats            | S <sub>2</sub>    | 30    | 30    | 30    | 30    | 30    | 36   | 36    | 36    | 36    | 36    | 36    | 41    |
| Weight                              | ca. kg            | 1.0   | 1.25  | 1.3   | 1.7   | 2.0   | 2.8  | 4.2   | 4.2   | 6.7   | 10.7  | 16.0  | 23.0  |
| Kvs – Value                         | m <sup>3</sup> /h | 1.6   | 3.8   | 4.3   | 6.7   | 11.5  | 14.0 | 20.6  | 22.6  | 37.1  | 71.1  | 104.0 | t.b.c |
| Cv – Value                          | gal /min          | 1.9   | 4.4   | 5.0   | 7.8   | 13.4  | 16.2 | 26.3  | 26.3  | 43.2  | 82.7  | 120.9 | t.b.c |

Dimensions in mm.