

Divertor and Changeover Valves

Type 06512 - Divertor Valve

Cryogenic Divertor Valves, bronze, PN50
for the installation of four Safety Valves,
provided for bursting disc connections,
“ cleaned and degreased for oxygen service “

Part No. 06512.X.0000

Female thread connection (G) acc. to ISO 7-Rp

Part No. 06512.X.6000

Female thread connection NPT acc. to ANSI B 1.20.1



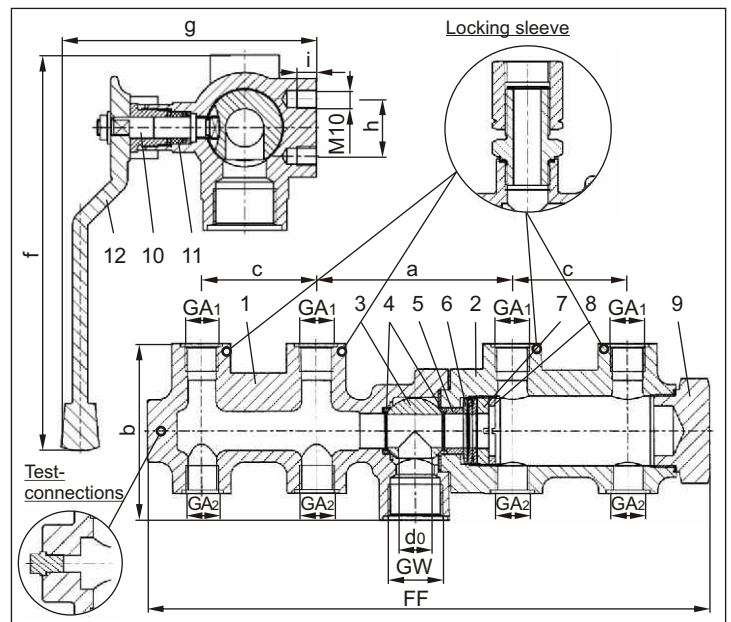
Available options - on request only:

- Inlet with union type braze or butt weld fitting
- two extra test connections 1/4" edgeways
- Inlet: female thread (GW) 1/2" or 3/4"
- Outlet GA1 with installed locking sleeve for easy positioning of safety valves
- Combination of different outlet threads GA1 - GA2

Applications:

Approved for air gases and cryogenic liquefied gases such as oxygen, nitrogen, krypton, carbon dioxide, argon, dinitrogen monoxide, trifluoromethan, carbon oxide, methane, ethane and ethylene.
Working temperature: -196°C / -321°F (77K) up to +120°C / +248°F (393K)

| Materials | DIN EN | ASTM |
|------------------|-----------------|------------------|
| 1 Body I | CC491K | B 62 UNS C83600 |
| 2 Body II | CC491K | B 62 UNS C83600 |
| 3 Ball | 1.4301 | A 276 Grade 304 |
| 4 Seat rings | PCTFE | |
| 5 Bush | CW612N | B 283 UNS C37700 |
| 6 Spring plates | 1.4310 | A 276 Grade 302 |
| 7 Spring clamp | CW612N | B 283 UNS C37700 |
| 8 Thread ring | CW612N | B 283 UNS C37700 |
| 9 Plug | CW509L | B 111 UNS C28000 |
| 10 Stem | 1.4301 | A 276 Grade 304 |
| 11 Gland packing | Graphite / PTFE | |
| 12 Lever | CC491K | B 62 UNS C83600 |



Marking acc. to Directive 99/36/EG (TPED) will only be carried out by written notice on purchase order.



| Type 06512 – Standard design | Technical data | | |
|------------------------------|-------------------|-----------|-----------|
| Nominal size | DN | 20 | 20 |
| Dimension code | .X. | 2004 | 2006 |
| Flow diameter | d ₀ | 20 | 20 |
| Inlet | GW | 1 | 1 |
| Outlet | GA ₁ | 1/2 | 3/4 |
| Outlet | GA ₂ | 1/2 | 1/2 |
| Face-to-face dimension | FF | 345 | 345 |
| Length | a | 120 | 120 |
| Height | b | 107 | 107 |
| Length | c | 70 | 70 |
| Length | f | 223 | 223 |
| Length | g | 134 | 134 |
| Length | h | 30 | 30 |
| Thread depth | i | 10 | 10 |
| Weight | ca. kg | 7.2 | 7.1 |
| Kvs – Value, one side open | m ³ /h | 7.7 | 7.7 |
| Cv – Value, one side open | gal /min | 9.2 | 9.2 |

Important: The valves must be fixed at the provided threads M10.

Dimensions in mm.